



LMC-5000 Series RESEARCH

After years of research and development in optical technology, Laxco has developed its flagship series; the LMC-5000. The LMC-5000 series brings the highest level of performance to Laxco's LMC product line and brings features and functionality that researchers require. Superior image quality, advanced contrast methods, high precision stage, large field of view, and advanced controls makes the LMC-5000 series a leader in its class.

KEY FEATURES

- Large T-Shaped body for maximum stability
- Carrying handle
- Stable main body
- Brightfield, Metallurgical, & Fluorescence Contrast Methods
- High contrast, broad beam optical design
- Modular design allows for flexibility in system configuration - 100% customizable for every need



OPTICAL SYSTEM

- Infinity corrected optical system
- Plan fluor objectives
- Wide range of magnifications: 2x, 4x, 10x, 20x, 40x, 60x, 50X Oil & 100x
- Anti-reflective coatings on optics
- Sharp images with color corrected optics
- Parcentric & Parfocal objectives





STAND

- Modular frame design
- Integrated LBD and ND filters
- Stable main body design
- Rackless, wire driven X/Y mechanical stage
- Coaxial focus drive, with focus range of 25mm and 1 um precision
- Reversed 6-position nosepiece (7-position optional)
- 12V/100W halogen transmitted illumination
- Full Koehler illumination with field and iris diaphragm

MULTI-OBSERVATION CONFIGURATIONS

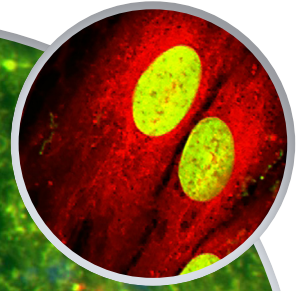
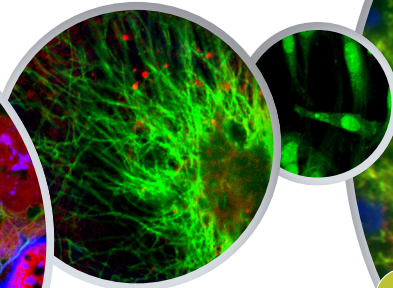
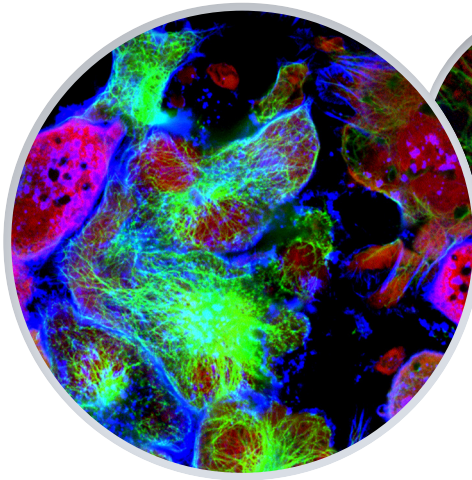
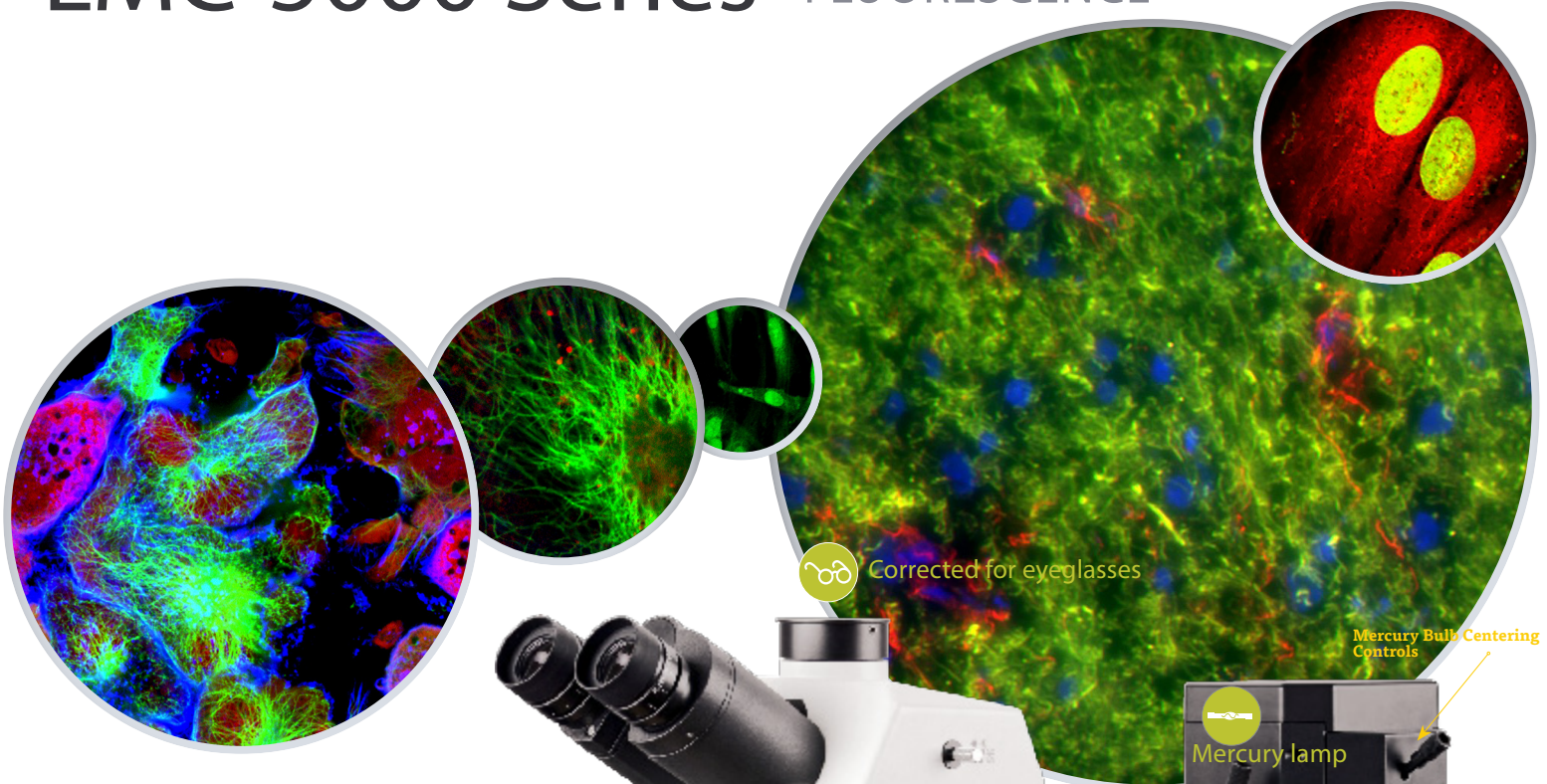
- LED Pointer
- 12V/100W Illumination
- Supports up to 5 heads



	CAT. NO.	HEAD	OBJECTIVES	OPTICS	FOV	F-CONTROLS	KOEHLER	CONDENSER	ILLUM	STAGE	OBJ TURRET
BRIGHTFIELD	LMCSBF1	TRINOC	4X, 10X, 20X, 40X, 100x Oil	INFINITY, PLAN FLUOR	25MM	COARSE & FINE	FULL	ABBE, WITH IRIS AND FLIP OUT LENS WITH 0.9 N.A.	TRANSMITTED 12V/100W HAL	RACKLESS X/Y MECH STAGE	6 POS
	LMCSBF2	TILTING TRINOC	4X, 10X, 20X, 40X, 100x Oil PLAN FLUOR 50X Oil PLAN	INFINITY, PLAN FLUOR, 50x PLAN	25MM	COARSE & FINE	FULL	ABBE, WITH IRIS AND FLIP OUT LENS WITH 0.9 N.A.	TRANSMITTED 12V/100W HAL	RACKLESS X/Y MECH STAGE	6 POS
	LMCSHM1	TRINOC	4X, 10X, 20X, 40X, 100x Oil PLAN FLUOR 50X Oil PLAN	INFINITY, PLAN FLUOR, 50x PLAN	25MM	COARSE & FINE	FULL	ABBE, WITH IRIS AND FLIP OUT LENS WITH 0.9 N.A.	TRANSMITTED 12V/100W HAL	RACKLESS X/Y MECH STAGE	6 POS
5 HEAD	LMCSMD1	TRINOC (MAIN) BINOC (OBSERVER)	4X, 10X, 20X, 40X, 100x Oil	INFINITY, PLAN FLUOR	22MM	COARSE & FINE	FULL	ABBE, WITH IRIS AND FLIP OUT LENS WITH 0.9 N.A.	TRANSMITTED 12V/100W HAL	RACKLESS X/Y MECH STAGE	6 POS
2 HEAD	LMCSMD3	TRINOC (MAIN) BINOC (OBSERVER)	4X, 10X, 20X, 40X, 100x Oil	INFINITY, PLAN FLUOR	22MM	COARSE & FINE	FULL	ABBE, WITH IRIS AND FLIP OUT LENS WITH 0.9 N.A.	TRANSMITTED 12V/100W HAL	RACKLESS X/Y MECH STAGE	6 POS



LMC-5000 Series FLUORESCENCE



Corrected for eyeglasses

Mercury Bulb Centering Controls

Mercury-lamp

Fluorescence Filter Selector

6 Channel Multi-Channel FL

Filter Type

Shutter Selector

UV Shield

Infinity Corrected

Aperture Diaphragm

Field Diaphragm

ND Filter



5 MINUTE WARM UP TIME



CENTERABLE FIELD DIAPHRAGM

Bulb Hours Indicator
Ready Indicator



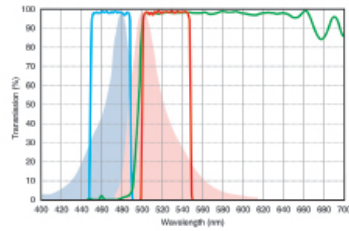


CUSTOM FILTER OPTIONS

HARD COATED FILTERS

The LMC-5000 fluorescence models utilize hard coating technology to provide superior performance and durability. Unlike more traditional soft coated filters which only block out 60% of the unwanted light and break down over time under UV light, resulting in lower blocking efficiencies; hard coated filters block out 90% of the unwanted light, and do not break down over time under any wave-length of light. This greater efficiency produces superior signal to noise ratio.

Fluorescence Filter

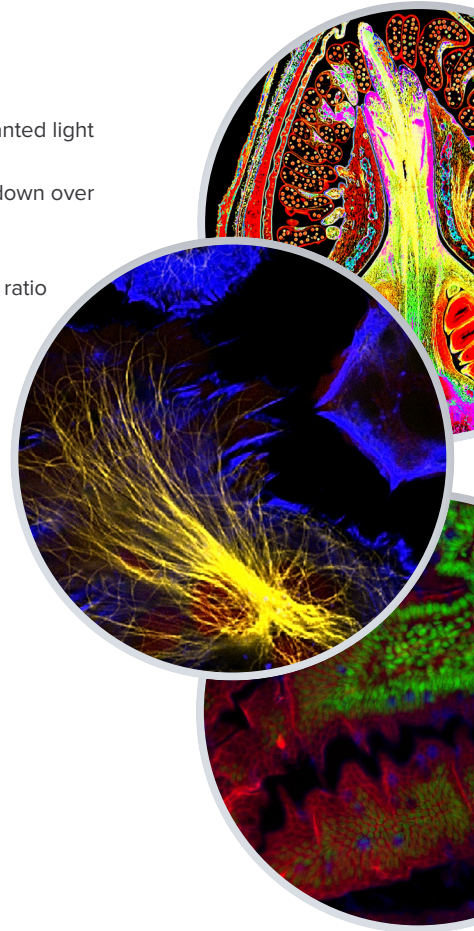


KEY FEATURES

- Blocks out 90% of unwanted light
- Coatings do not break down over time
- Superior signal to noise ratio

MERCURY FLUORESCENCE

- Full spectrum illumination
- 100 watt mercury bulb
- Digital power supply
- Centerable lamp housing
- 6 position filter turret
- Brightfield and fluorescence observation
- Fluorescence light block



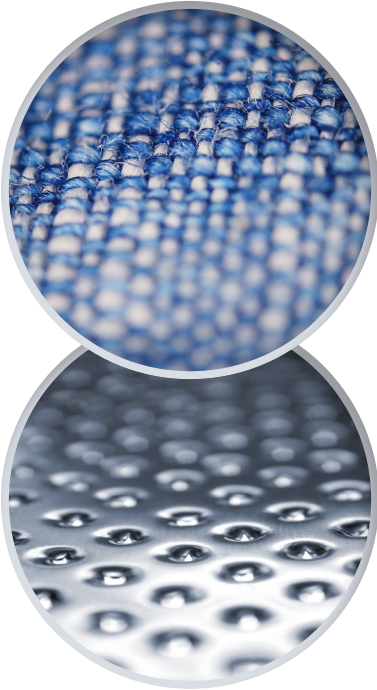
OBJECTIVES

Series	Magnification	N.A.	W.D.	F.N.	Cover glass thickness	Immersion	Spring
Plan Fluor Series	4x	0.13	18.5	25	0.17	/	/
	10x	0.30	10.6	25	0.17	/	/
	20x	0.50	2.33	25	0.17	/	/
	40x	0.75	0.6	25	0.17	/	/
	100x	1.28	0.21	25	0.17	oil	/

CAT. NO.	HEAD	OBJECTIVES	OPTICS	FOV	F-CONTROLS	KOEHLER	CONDENSER	ILLUM	STAGE	OBJ TURRET
LMC5FL1	TRINOC	4X, 10X, 20X, 40X, 100X Oil	INFINITY, PLAN FLUOR	25MM	COARSE & FINE	FULL	ABBE, WITH IRIS AND FLIP OUT LENS WITH 0.9 N.A.	TRANSMITTED 12V/100W HAL	RACKLESS X/Y MECH STAGE	6 POS



LMC-5000 Series METALLURGICAL



KEY FEATURES

- Reflected and reflected/transmitted light configurations for Material Science applications
- Can be purchased separately or in a pre-configured system
- 12V/100W Halogen Illumination
- Large T-Shaped body for maximum stability
- High contrast, broad beam optical design
- Modular design allows for flexibility in system configuration - 100% customizable for every need



REFLECTED ILLUMINATOR

- Brightfield and Darkfield Illumination
- BF/DF Plan Fluor metallurgical objectives
- Polarization filters



OPTICAL SYSTEM

- Infinity corrected optical system
- BF/DF Plan Fluor metallurgical objectives
- 25MM FOV
- Wide range of magnifications: 5x, 10x, 20x, 50x, 100x
- Anti-reflective coatings on optics
- Sharp images with color corrected optics
- Parcentric & Parfocal objectives



	CAT. NO.	HEAD	OBJECTIVES	OPTICS	FOV	F-CONTROLS	KOEHLER	CONDENSER	ILLUM	STAGE	OBJ TURRET
TRANSMITTED	LMC5MT1	TRINOC	5X, 10X, 20X, 40X, 100X	INFINITY, MPLANFL BF/DF	25MM	COARSE & FINE	FULL	ABBE, WITH IRIS AND FLIP OUT LENS WITH 0.9 N.A.	TRANSMITTED 12V/100W HAL	DOUBLE LAYER MECH STAGE	6 POS
TRANSMITTED REFLECTED	LMC5MT2	TRINOC	5X, 10X, 20X, 40X, 100X	INFINITY, MPLANFL BF/DF	25MM	COARSE & FINE	FULL	ABBE, WITH IRIS AND FLIP OUT LENS WITH 0.9 N.A.	TRANSMITTED/ REFLECTED 12V/100W HAL	DOUBLE LAYER MECH STAGE	6 POS